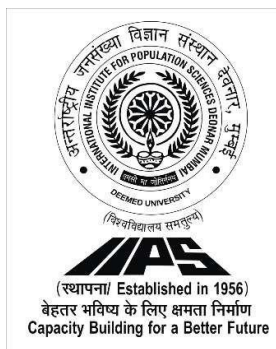


# International Institute for Population Sciences

GOVANDI STATION ROAD, DEONAR, MUMBAI 400088



## Criterion: III

**4.3.5 - Institution has the following Facilities for e-content development Media centre Audio visual centre Lecture Capturing System(LCS) Mixing equipment's and softwares for editingContents**

| Sr.No. | Particulars                                                      | Page. No. |
|--------|------------------------------------------------------------------|-----------|
| 1      | e- Pathshala content                                             | 1-12      |
| 2      | Library management software                                      | 13-14     |
| 3      | e-Office system of IIPS                                          | 15        |
| 4      | e- Leave Management System of IIPS                               | 16        |
| 5      | Annual Performance Assessment Report(APAR) online system of IIPS | 16        |
| 6      | Online Financial Services of IIPS                                | 17        |
| 7      | Enterprise resource planning software (ERP) system of IIPS       | 18        |
| 8      | Digital Classroom and ICT Facilities                             | 20        |

M-15: Push and Pull Factors in Migration and Lee's Theory




A Gateway to all Post Graduate Courses



An MHRD Project under its National Mission on Education through ICT (NME-ICT)

Subject: **Population Studies**

Production of Courseware

 - Content for Post Graduate Courses

Paper : **Migration and Urbanisation**

Module : **Push-Pull Factors and Everett Lee's Migration Theory**



ज्ञान-विज्ञान विमलये

HD



0:10 / 26:25

Scroll for details



## Development Team

**Principal Investigator:**

**Prof. S. Siva Raju**

Tata Institute of Social Sciences, Hyderabad

**Paper Coordinator:**

**Prof. R. B. Bhagat**

Intl. Institute for Population Sciences, Mumbai

**Content Writer:**

**Prof. R.B. Bhagat, Dr. Kunal Keshri, Prof. D. P. Singh**

**Content Reviewer:**

**Prof. Abdul Shaban**

Tata Institute of Social Sciences, Tuljapur

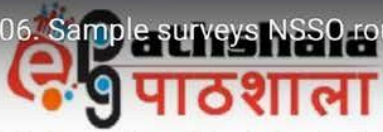


0:12 / 26:25

Scroll for details



M-06 Sample surveys NSSO rounds



A Gateway to all Post Graduate Courses



An MHRD Project under its National Mission on Education through ICT (NME-ICT)

Subject: **Population Studies**

Production of Courseware

 - Content for Post Graduate Courses

Paper : **Demographic Data and Population Projections**

Module : **Sample Surveys NSSO Rounds**



ज्ञान-विज्ञान विमर्शये

CC

HD

+



0:08 / 32:57

Scroll for details





## Development Team

**Principal Investigator:**

**Prof. S.Siva Raju**

Tata Institute of Social Sciences, Hyderabad

**Paper Coordinator:**

**Prof. Sulabha Parasuraman**

Intl. Institute for Population Sciences, Mumbai

**Content Writer:**

**Dr. Dhananjay Bansod**

International Institute for Population Sciences (IIPS), Mumbai

**Content Reviewer:**

**Dr. U. V. Somayajulu**

Sigma Research and Consulting, New Delhi



M-07: National Family Health Surveys, District Level Health Surveys, Annual Health Surveys



A Gateway to all Post Graduate Courses



An MHRD Project under its National Mission on Education through ICT (NME-ICT)

Subject: **Population Studies**

Production of Courseware

 - Content for Post Graduate Courses

Paper : **Demographic Data and Population Projections**

Module : **National Family Health Survey/ District Level**

**Household Survey/ Annual Health Survey**



ज्ञान-विज्ञान-विमलम्



0:08 / 34:23

Scroll for details

## Development Team

**Principal Investigator:**

**Prof. S.Siva Raju**

Tata Institute of Social Sciences, Hyderabad

**Paper Coordinator:**

**Prof. Sulabha Parasuraman**

Intl. Institute for Population Sciences, Mumbai

**Content Writer:**

**Dr.Dhananjay Bansod**

Intl. Institute for Population Sciences, Mumbai

**Content Reviewer:**

**Dr. U. V. Somayajulu**

Sigma Research and Consulting, New Delhi

M-08: Sample Surveys on Adolescent Part A



A Gateway to all Post Graduate Courses



An MHRD Project under its National Mission on Education through ICT (NME-ICT)

Subject: **Population Studies**

Production of Courseware

 - Content for Post Graduate Courses

Paper : **Demographic Data and Population Projections**

Module : **Sample Surveys on Adolescents – Part A**



ज्ञान-विज्ञान विमर्शने



0:07 / 26:49

Scroll for details



## Development Team

**Principal Investigator:**

**Prof. S.Siva Raju**

Tata Institute of Social Sciences, Hyderabad

**Paper Coordinator:**

**Prof. Sulabha Parasuraman**

Intl. Institute for Population Sciences, Mumbai

**Content Writer:**

**Dr.Dhananjay Bansod**

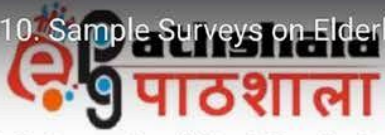
Intl. Institute for Population Sciences, Mumbai

**Content Reviewer:**

**Dr. U. V. Somayajulu**

Sigma Research and Consulting, New Delhi

M-10: Sample Surveys on Elderly Part A



A Gateway to all Post Graduate Courses



An MHRD Project under its National Mission on Education through ICT (NME-ICT)

Subject: **Population Studies**

Production of Courseware

 - Content for Post Graduate Courses

Paper : **Demographic Data and Population Projections**

Module : **Sample Surveys on Elderly – Part A**



ज्ञान-विज्ञान विमुक्तये



0:07 / 29:46

Scroll for details

## Development Team

**Principal Investigator:**

**Prof. S.Siva Raju**

Tata Institute of Social Sciences, Hyderabad

**Paper Coordinator:**

**Prof. Sulabha Parasuraman**

Intl. Institute for Population Sciences, Mumbai

**Content Writer:**

**Dr.Dhananjay Bansod**

Intl. Institute for Population Sciences, Mumbai

**Content Reviewer:**

**Dr. U. V. Somayajulu**

Sigma Research and Consulting, New Delhi

M-12: Quality of common errors from Census data Part 1



A Gateway to all Post Graduate Courses



An MHRD Project under its National Mission on Education through ICT (NME-ICT)

Subject: **Population Studies**

Production of Courseware

 - Content for Post Graduate Courses

Paper : **Demographic Data and Population Projections**  
Module : **Quality of Common Errors from Census Data – Part A**



ज्ञान-विज्ञान विमर्शये  
CC BY NC ND

0:08 / 30:15

Scroll for details

## Development Team

**Principal Investigator:**

**Prof. S.Siva Raju**

Tata Institute of Social Sciences, Hyderabad

**Paper Coordinator:**

**Prof. Sulabha Parasuraman**

Intl. Institute for Population Sciences, Mumbai

**Content Writer:**

**Dr.Dhananjay Bansod**

Intl. Institute for Population Sciences, Mumbai

**Content Reviewer:**

**Dr. U. V. Somayajulu**

Sigma Research and Consulting, New Delhi



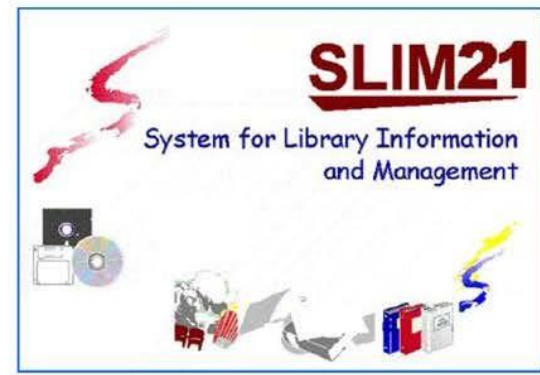
- Advanced Search
- My Info
- Browse
- Arrivals
- Expected
- Reference Items
- Journal List
- Media List
- Rules
- Show My Basket

To begin, type in the search box or use any of the other menu options.

Library About Library Item Types



Searching in main collection only.



Library OPAC Address



E-Mail Us



© 2007 Algorithms Consultants Pvt. Ltd. Pune, INDIA.

Latest 10 items

|                                                                                    |                                                                                           |
|------------------------------------------------------------------------------------|-------------------------------------------------------------------------------------------|
| Leskovec, Jure; Rajaraman, Anand & Ullman, Jeffrey David: Mining of                | Salvatore, Dominick & Reagle, Derrick: Schaum's outlines : Statistics and                 |
| VanderPlas, Jake: Python data science handbook : Essential tools for working with  | Hastie, Trevor; Tibshirani, Robert & Friedman, Jerome: Elements of                        |
| Wickham, Hadley & Grolemund, Garrett: R for data science : Import, tidy, transform | Bishop, Christopher M.: Pattern recognition and machine learning                          |
| Li, Lixin; Zhou, Xiaolu & Tong, Weitian: Spatiotemporal analysis of air pollution  | New York: Satia, Jay & Chauthan, Kavita: Improving quality of care in family planning - A |
| Allen, David W.: GIS tutorial, Vol.2 : Spatial analysis workbook - for R&GIS       | Shalev-Shwartz, Shai & Ben-David, Shai: Understanding machine learning :                  |



## International Institute for Population Sciences

Deemed to be University

(An Autonomous Organization of Ministry of Health & Family Welfare, Government of India)

Search...

[About IIPS](#) [Academics](#) [Admission](#) [Administration](#) [Faculty & Staff](#) [Research & Publications](#) [Library](#) [Information](#) [Life @ IIPS](#)

## Self-Learning Material

[Home](#) > [Self-Learning Material](#)

|                  |        |                   |                 |              |                    |
|------------------|--------|-------------------|-----------------|--------------|--------------------|
| About Department | People | Programme Offered | Admission       | Our Learners | Learning Resources |
| Students Corners | FAQ    | Online Payment    | UGC Recognition |              |                    |

### Self-Learning Material (SLM)

The self-instructional course study materials are accessible to all the enrolled students through the 'Moodle' platform. The credentials will be given to the enrolled students to avail the 'Moodle' facility. There are 18 papers consisting of foundation, core and optional papers in the course curriculum. Dedicated faculty of the Dept. and regular faculty of the Institute have contributed to developing study materials. The study materials have been compiled and edited by the dedicated faculty of the Department. To maintain the quality of the course, the study materials have been reviewed by outside subject experts.

Login to Download SLM

### Useful Information

- |                                                                                                                                             |                                                                                                                                               |
|---------------------------------------------------------------------------------------------------------------------------------------------|-----------------------------------------------------------------------------------------------------------------------------------------------|
| <ul style="list-style-type: none"> <li>Admissions</li> <li>Calendar</li> <li>Tenders</li> <li>ICT Unit/ Data Centre</li> <li>RTI</li> </ul> | <ul style="list-style-type: none"> <li>Placement Cell</li> <li>Examination Cell</li> <li>Internal Committee</li> <li>Annual Report</li> </ul> |
|---------------------------------------------------------------------------------------------------------------------------------------------|-----------------------------------------------------------------------------------------------------------------------------------------------|

## Quick Links

- › Disclaimer
- › Copyright Policy
- › Privacy Policy
- › Hyperlink Policy
- › Help
- › Site Map
- › FAQ

## E-OFFICE SYSTEM PERFORMED BY NIC GOVT OF INDIA

The screenshot displays the eOffice portal interface, which is a web-based system for managing office operations. The interface is divided into several sections:

- Header:** Includes the eOffice logo, navigation links (HOME, DIRECTORY, CONTACT, EMPLOYEE SERVICES, QUICK LINKS), and a search bar.
- Quote of the week:** A quote by Alfred Mercier: "What we learn with pleasure we never forget."
- Left Sidebar:** Contains links to various services and tools, including eFile, RMS, NIC mail, Calendar, Gallery, and eConnect.
- Main Content Area:**
  - Notice Board:** A list of recent notices, including updates on Intercom, Travel Grant guidelines, and Circulars.
  - Download Forms:** A section for downloading various forms, such as Air Travel Booking Format and Application for claiming reimbursement of travelling expenses.
  - Employee Corner:** A section for employee-related services, including Birthday Wishes, Superannuation, and joined Today.
- Right Sidebar:** Contains a section for "जान का ख़ाद" (Jaan Ka Khad) and a "News" section with articles about a noted author and columnist, and two objects spotted possibly related to MH370.
- Footer:** Includes a "Connect" section with links to eOffice portal, Report Issue, Submit Feedback, eOffice Training, and Learning Resources.

**LEAVE MANAGEMENT SYSTEM PERFORMED BY NIC GOVT OF INDIA**

APAR MANAGEMENT SYSTEM PERFORMED BY NIC GOVT OF INDIA

[illegible]

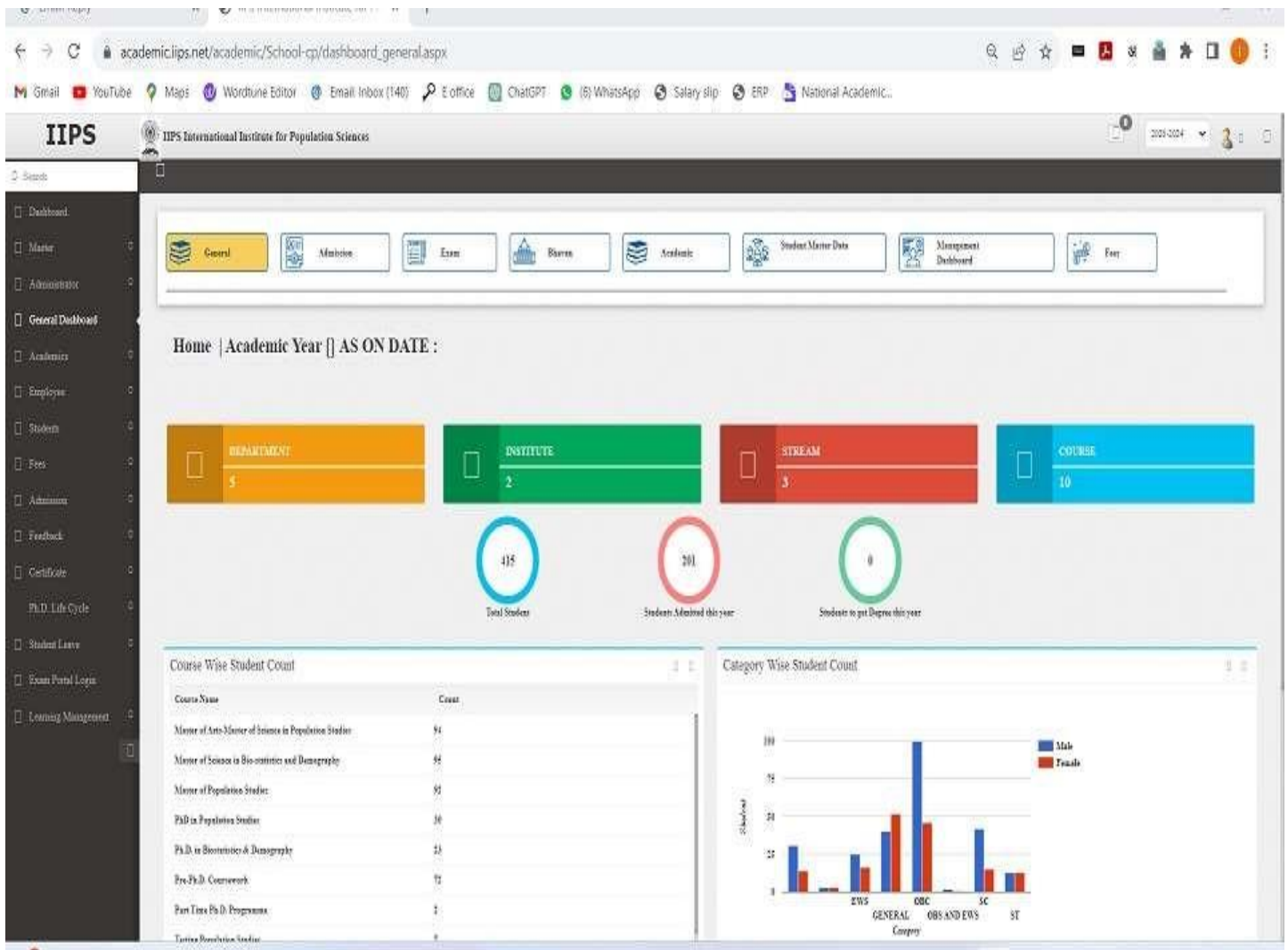


## FINANCIAL SERVICES SYSTEM



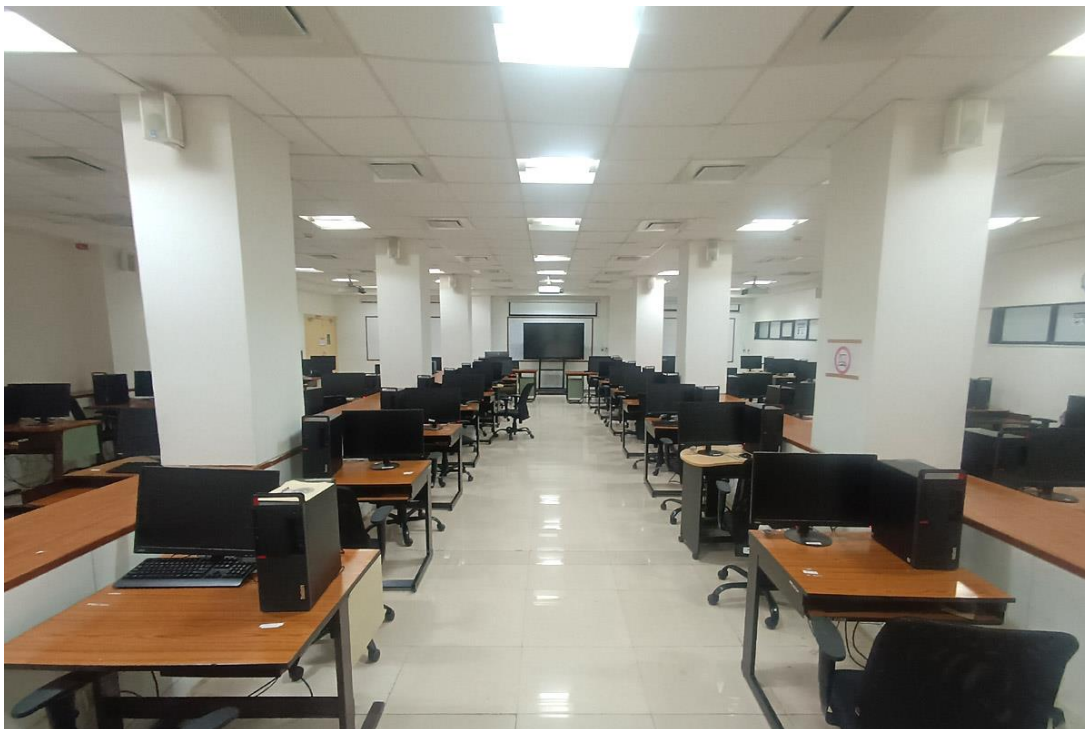


## Enterprise resource planning software (ERP)





**Digital Classroom/ LCS**



**ICT lab.**